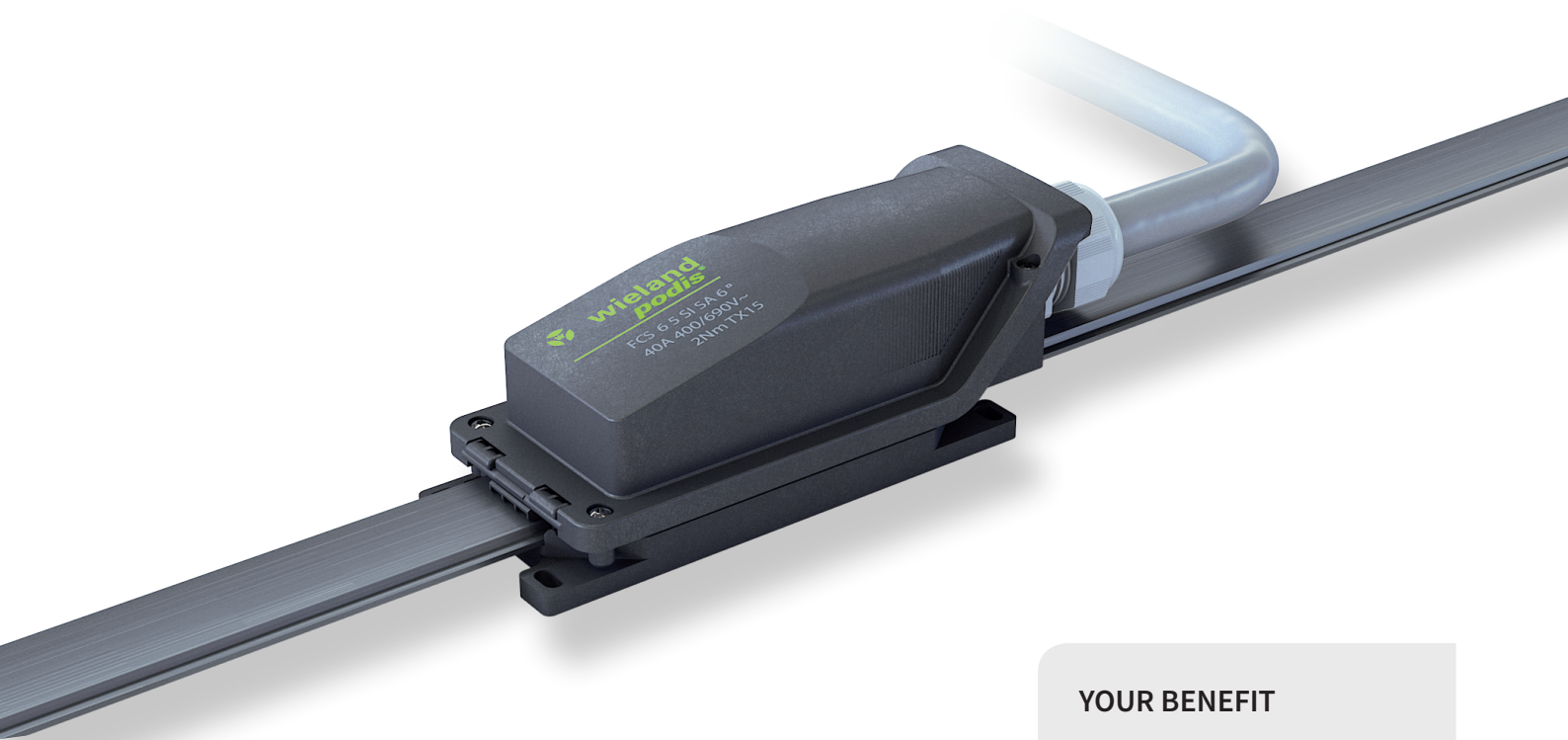


podis® 5G6

POWER DISTRIBUTION

The flexible power bus for industrial applications.



The power bus system podis® is dedicated for the decentral power distribution in machines and plants with large dimensions.

Now, this successful system got extended by a new range of more powerful cable and components.

Much larger loads can be supplied compared to the existing solution. The power bus is ideally used in applications such as conveyors at airports and warehouses, parcel and post distribution centres, also on production plants like in automotive industry.

YOUR BENEFIT

+ Time saving

No dismantling or uninsulation necessary

+ Flexible

Because anytime extendable at any point

+ Safe

Permanent high contact quality thanks to the copper displacement technology



APPLICATIONS

- Machines and plants with large dimensions
- Airports
- Warehouses
- Logistics centers for parcel & post
- Production facilities
- Manufacturing facilities
- Automotive industry



FEATURES

- 5 core tray cable system
- 6 mm² cable size
- Cores in one plane
- Connecting cable: up to 16 mm²
- Current load: 41 A
- Voltage resistance:
IEC: 690 V, UL: 600 V

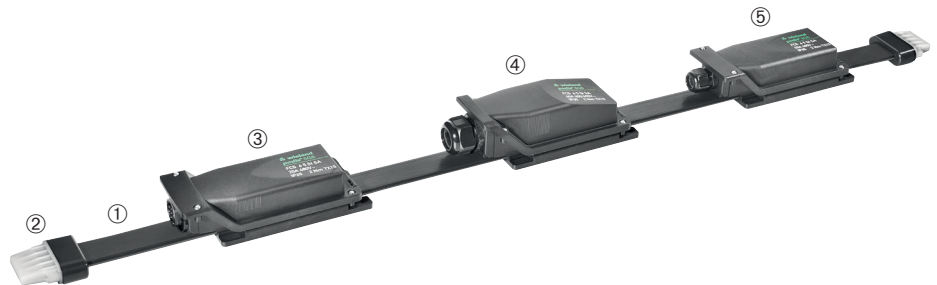


ADVANTAGES

- Higher current
- Higher load
- More drives per segment
- Less feed-in connections and feeder cables
- Less complexity
- Less voltage drop
- Longer cable sections

The connection modules are designed for higher current and available for higher voltage. At the same load the voltage drop is reduced in installations with very long cable lengths. podis® does convince its users especially by its fast and safe installation, thanks to the copper displacement technology without any dismantling or uninsulation. So the systems provides highest flexibility during set-up of a plant, as well as in extensions or rearrangement afterwards.

The modular system podis® provides feed-in modules, tap-off modules, distribution modules, disconnecter switches, fixed and pluggable tap-offs, pre-manufactured cable harnesses and a useful range of accessories.



Description	Type	Part Nr.
① Flat cable 5G6, multinorm VDE and UL	XPE 5G6	00.729.0305.1
② Cable end cap		Z6.563.6053.0
③ Tap-off module, reduced height	FCS 6 5 SI SA RST20i5 LH	75.252.0153.1
④ Feed-in module	FCS 6 5 SI SA M32	75.250.0053.1
⑤ Tap-off module, reduced height	FCS 6 5 SI SA M25 LH	75.256.0153.1
Tap-off module	FCS 6 5 SI SA RST20i5	75.252.0053.1
Tap-off module	FCS 6 5 SI SA M25	75.256.0053.1



Wieland Electric GmbH
Brennerstraße 10 – 14 · 96052 Bamberg · Germany
Fon +49 951 9324-0 · info@wieland-electric.com

Global sales partners in over 70+ countries:

www.wieland-electric.com